

The image features a grid of six panels, each containing a silhouette of a person's head and shoulders in profile. The top-left panel shows a dark silhouette against an orange background with a white logo consisting of two overlapping shapes. The top-middle panel shows an orange silhouette against a dark background. The top-right panel shows a dark silhouette against a purple background with a cracked texture. The bottom-left panel shows a dark silhouette against a purple background with a cracked texture. The bottom-middle panel shows a dark silhouette against an orange background. The bottom-right panel shows an orange silhouette against a dark background. A large black circle is positioned in the bottom right corner, partially overlapping the purple background.

Blaggrave

Leading with hope

A vision for a hopeful future: grounded
in community, led by young people.

Who we are

We believe young people facing deep-rooted inequality are powerful leaders of change.

But too often they're denied the resources, networks and spaces that allow their ideas to flourish.

We change that.

We invest in young people, their leadership, and the communities and organisations that surround them — so that opportunity, community wealth and justice can grow for future generations.



What we do



Locally, we...

Fund and stand alongside young changemakers

Invest in the local youth sector, to further support youth-led change

Build or renovate physical spaces that will be used by young people and their communities



Nationally, we...

Connect young changemakers across our locations and share local insights about youth-led change and community-owned buildings nationally.

We do this so that there is a thriving national network of young changemakers, with funding and community sectors that prioritise youth leadership and community ownership.



Birmingham

London

Portsmouth

Moving from national to local

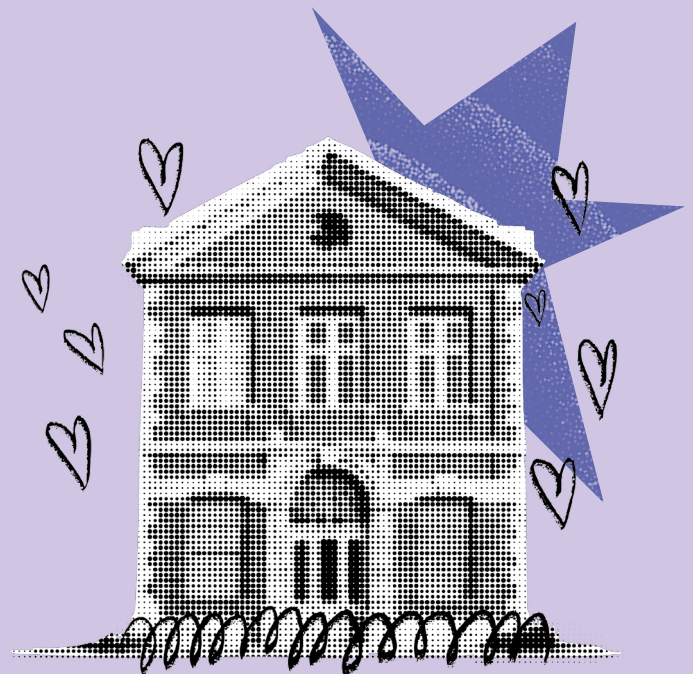
Leading with Hope marks a bold evolution in our work.

We are moving from national and regional grant making to **deep, long-term, place-based investment** in: Portsmouth, London and Birmingham.



Hubs

In each place, we're investing in hubs: buildings where young people can come together, imagine boldly and lead change that lasts: where youth and community organisations can network and thrive, and where the wider community will also be welcome.



People

Over time, we will **transition those buildings, along with our wider investments, towards youth-centred community ownership and shared decision making** to young people and their communities.



What this means in practice

In each of our three places we will:

- Champion young people who are leading change; through grants and a package of support
- Make grants to the local youth organisations and networks that provide the wider ecosystem for young changemakers
- Build or refurbish physical spaces for young changemakers and their communities
- Shape all our programmes led by young people and their communities

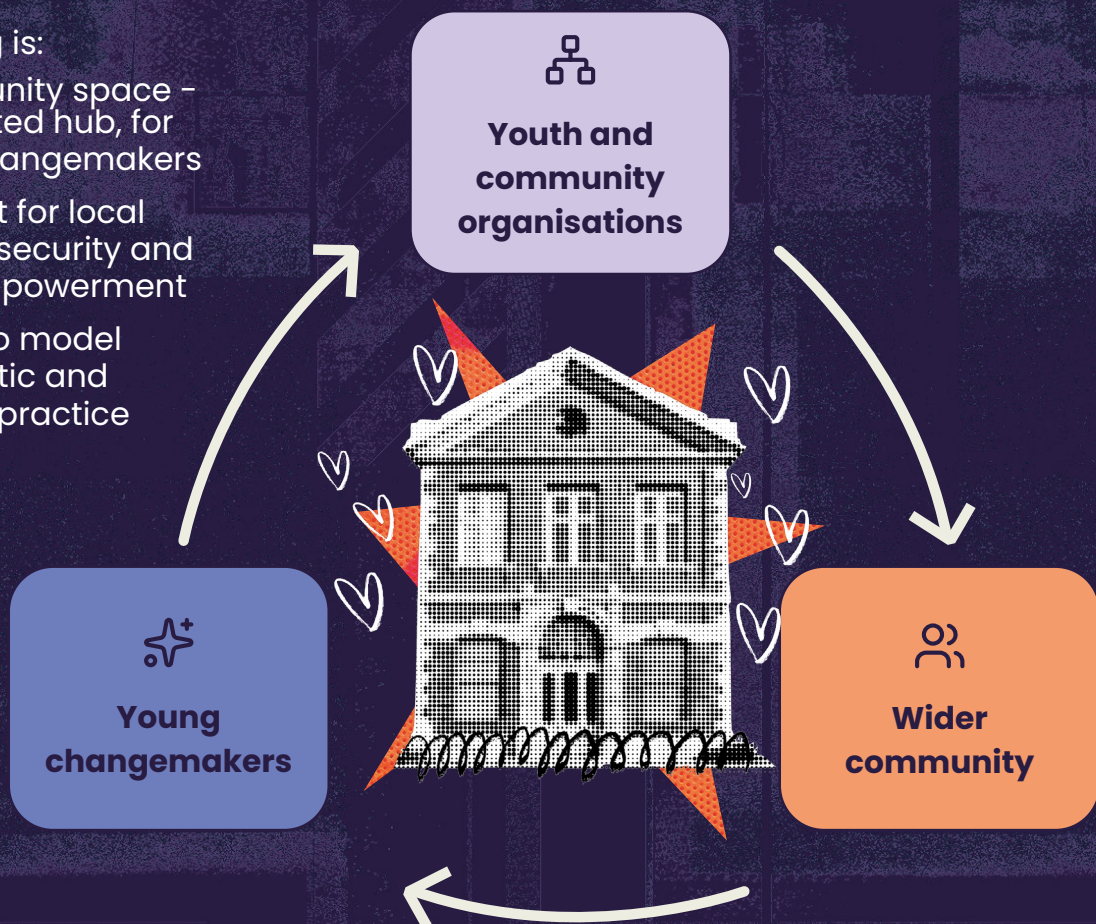
Our goal:

We want to leave a legacy of youth-led local ownership and long-term financial security for the community. We also want to share what we learn nationally, to inspire long-lasting change.

Centering the building

The building is:

- A community space – a dedicated hub, for young changemakers
- A catalyst for local financial security and youth empowerment
- A place to model democratic and inclusive practice



Our grant making under this strategy

Through 2026 to 2030, we are entering a period of thoughtful transition.

We will continue to fund young people directly through:

Challenge & Change

This grant programme supports individuals, collectives or movements led by young people with direct lived experience of the injustice they're tackling, with a grant of £10,000 and a twelve-month programme of support.

These programmes will gradually shift to focus on our three places.

Pathways Fund

This programme supports youth-led organisations that have demonstrated impact, built credibility, and now need trust and multi-year investment, with £20-£30,000 per year for three years.

We will also invest in organisations that:

- meet young people's basic needs
- empower young people to challenge injustice
- enable youth-led change to take root and last



Our grants are just part of the story; we build relationships with grant partners and offer support beyond grants.



Our guiding principles



All of our work is guided by these six principles.



Valuing relationships:

We'll build relationships to connect with young people, organisations, and communities. We'll listen deeply, staying conscious of our responsibility as an endowed trust.



Humility and transparency:

We know we'll get things wrong—despite good intentions. We're committed to learning, acknowledging misalignments when they occur and addressing them.



Centring empowerment:

We're committed to youth-led change, and collaboration between generations. We want to secure resources and decision-making for young people and their communities over time.



Anti-racism and anti-oppression:

We actively challenge racism and all systems that unfairly harm or exclude people—including ableism, sexism, classism, homophobia, transphobia, and more.



Taking account of future generations:

In our decision-making we consider long-term outcomes for future generations and the planet.

Who we're here for

We are here for young people aged 16–30 who are facing deep-rooted inequality, and who live within communities shaped by inequality, poverty and social exclusion.

In each place, we'll work with young people to define what inequality looks like locally, and hold ourselves accountable to that definition.



We hold a responsibility to future generations — investing in young people, organisations and buildings to enable positive change that stands the test of time.





The Blaggrave Trust

Toynbee Hall,
28 Commerical Street,
London E1 6LS

Copyright ©2026 The Blaggrave Trust
Registered charity number 1164021

www.blaggravetrust.org